

## AIR CYLINDER

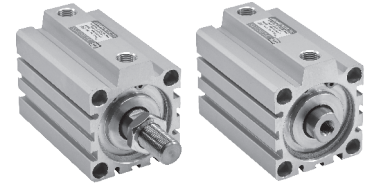
### Series A83, A84

Cat No A83, A84 - 01 - 01 - A

### COMPACT CYLINDERS DOUBLE ACTING ( Ø32 to 63 mm )

#### Features

- Compact, light weight and space saving design
- Large clamping force in relation to their size
- Low friction, long life seal design
- Elastomer end cushion
- Magnetic & Non-magnetic version



#### Application

These compact cylinders are widely used in low cost automation, SPM's, Industrial machinery, Jigs & fixtures etc.

#### Technical Specifications

Cylinder bore Ø (mm)	32	40	50	63
Standard strokes* (mm)	5, 10, 15, 20, 25, 30, 40, 50, 60		10, 20, 30, 40, 50, 60, 70, 80	
Medium	Compressed air - Filtered - Lubricated			
Working pressure range	0.5 to 10 bar			
Ambient temperature	-10° to +60° C			
Medium temperature	+5° to +50° C			

\* For Non standard or longer stroke cylinders, contact your regional dealer or **JANATICS**

#### Output force ( force in N : 1N = 0.1 kgf )

Cylinder bore Ø (in mm)	Rod Ø (in mm)		Working pressure in bar								
			2	3	4	5	6	7	8	9	10
32	16	Extend	145	217	289	362	434	507	579	651	724
		Retract	108	162	217	271	325	380	434	488	542
40	16	Extend	226	339	452	565	678	792	905	1018	1130
		Retract	190	285	380	475	570	665	760	855	950
50	20	Extend	353	530	706	884	1060	1237	1414	1590	1767
		Retract	297	445	594	742	890	1039	1187	1336	1484
63	20	Extend	561	842	1122	1403	1683	1964	2244	2525	2805
		Retract	505	757	1009	1261	1514	1766	2018	2270	2523

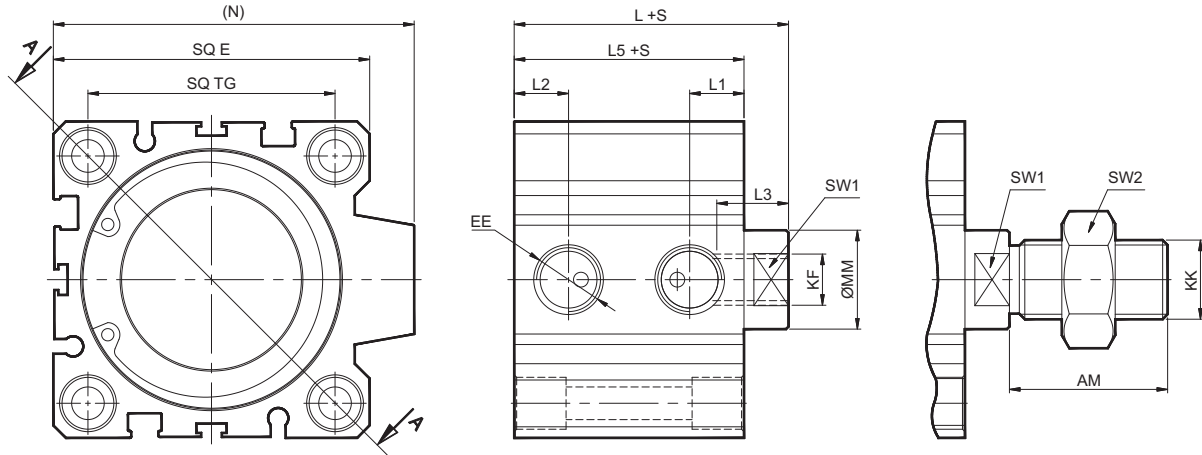
( Above values have been worked out taking frictional loss into consideration )

# AIR CYLINDER

## Series A83, A84

Cat No A83, A84 - 01 - 01 - A

### Basic cylinder



### Section AA

Basic Model	Model 1	Model 2
Counter bore and through hole on both sides	Counter bore and thread on both sides	Thread on both sides

### Basic Model – Counter bore and through hole on both sides

+ Add stroke

Cylinder bore Ø	KF	MM	L3	SW1	d1	d2	L4	L1 ±0.1	L2 ±0.1	EE	TG	E	N	L5 ±0.3	L ±1	KK	AM	SW2
32	M8 x 1.25	16	13	14	5.5	9	8	9	9	G1/8	34	47.5	53	45	52	M12 x 1.25	24	19
40	M8 x 1.25	16	13	14	5.5	9	9.5	10	10	G1/8	40	55	60.5	41.5	48.5	M12 x 1.25	24	19
50	M10 x 1.5	20	15	17	6.6	10.5	10.5	11	11	G1/4	50	64	73	46.5	54.5	M16 x 1.5	32	24
63	M10 x 1.5	20	15	17	9	13.5	10.5	11	11	G1/4	60	77	86	48.5	56.5	M16 x 1.5	32	24

### Model 1 – Counter bore and thread on both sides

+ Add stroke

Cylinder bore Ø	KF	MM	L3	SW1	d1	d2	L4	L1 ±0.1	L2 ±0.1	EE	TG	E	N	L5 ±0.3	L ±1	KK	AM	SW2	T2	L6
32	M8 x 1.25	16	13	14	5.5	9	8	9	9	G1/8	34	47.5	53	45	52	M12 x 1.25	24	19	M6x1	10
40	M8 x 1.25	16	13	14	5.5	9	9.5	10	10	G1/8	40	55	60.5	41.5	48.5	M12 x 1.25	24	19	M6x1	10
50	M10 x 1.5	20	15	17	6.6	10.5	10.5	11	11	G1/4	50	64	73	46.5	54.5	M16 x 1.5	32	24	M8x1.25	13
63	M10 x 1.5	20	15	17	9	13.5	10.5	11	11	G1/4	60	77	86	48.5	56.5	M16 x 1.5	32	24	M10x1.5	16

### Model 2 – Thread on both sides

+ Add stroke

Cylinder bore Ø	KF	MM	L3	SW1	d1	d2	L4	L1 ±0.1	L2 ±0.1	EE	TG	E	N	L5 ±0.3	L ±1	KK	AM	SW2	T2	L6
32	M8 x 1.25	16	13	14	5.5	9	8	9	9	G1/8	34	47.5	53	45	52	M12 x 1.25	24	19	M6x1	10
40	M8 x 1.25	16	13	14	5.5	9	9.5	10	10	G1/8	40	55	60.5	41.5	48.5	M12 x 1.25	24	19	M6x1	10
50	M10 x 1.5	20	15	17	6.6	10.5	10.5	11	11	G1/4	50	64	73	46.5	54.5	M16 x 1.5	32	24	M8x1.25	13
63	M10 x 1.5	20	15	17	9	13.5	10.5	11	11	G1/4	60	77	86	48.5	56.5	M16 x 1.5	32	24	M10x1.5	16

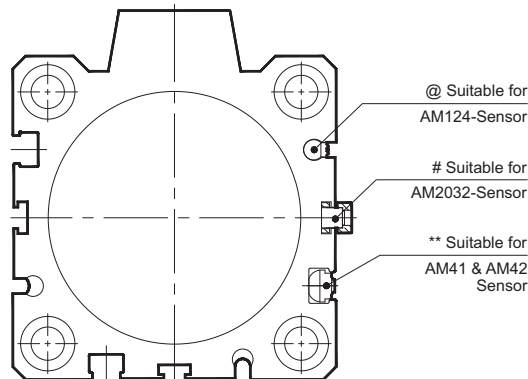
# AIR CYLINDER

## Series A83, A84

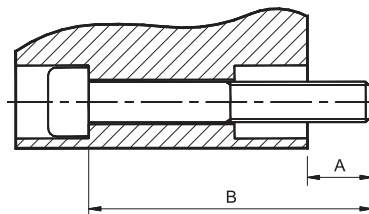
Cat No A83, A84 - 01 - 01 - A

### Magnetic sensor

Accessories for Magnetic Cylinder



### Recommended bolt size for basic model mounting



Ordering no.	A	Bolt size B	Ordering no.	A	Bolt size B	Ordering no.	A	Bolt size B	Ordering no.	A	Bolt size B
A83 032 005	8	M5 x 50	A83 040 005	8	M5 x 45	A83 050 010	9	M6 x 55	A83 063 010	12	M8 x 60
010	8	x 55	010	8	x 50	020	9	x 65	020	12	x 70
015	8	x 60	015	8	x 55	030	9	x 75	030	12	x 80
020	8	x 65	020	8	x 60	040	9	x 85	040	12	x 90
025	8	x 70	025	8	x 65	050	9	x 95	050	12	x 100
030	8	x 75	030	8	x 70	060	9	x 105	060	12	x 110
040	8	x 85	040	8	x 80	070	9	x 115	070	12	x 120
050	8	x 95	050	8	x 90	080	9	x 125	080	12	x 130
060	8	x 105	060	8	x 100						

### How to order

A83		040		050		0		Optional M	
Model		Piston Ø (mm)		Stroke (mm)		Mounting type		Thread	
83	Magnetic cylinder	032	- Ø 32	005	- 5	0	- Basic Counter bore and through hole on both sides	Nil	- Female thread
84	Non-Magnetic cylinder	040	- Ø 40	010	- 10	1	- Counter bore and thread on both sides	M	- Male thread
		050	- Ø 50	015	- 15	2	- Thread on both sides		
		063	- Ø 63	020	- 20				
				025	- 25				
				030	- 30				
				040	- 40				
				050	- 50				
				060	- 60				
				070	- 70				
				080	- 80				

#### Ordering Example:

Ordering no. for Magnetic cylinder with 40dia bore, 50mm stroke with Female thread: **A83040050-0**

Ordering no. for Non-Magnetic cylinder with 63dia bore, 70mm stroke with Male thread: **A84063070-0-M**

Ordering no. for Magnetic cylinder with 63dia bore, 70mm stroke with Counter bore and thread on both sides and Male thread: **A83063070-1-M**

Ordering no. for Non-magnetic cylinder with 63dia bore, 50mm stroke with thread on both sides and Female thread: **A84063050-2**

For your special requirements of cylinders or for further information contact your regional dealer or **JANATICS**

Subject to change